

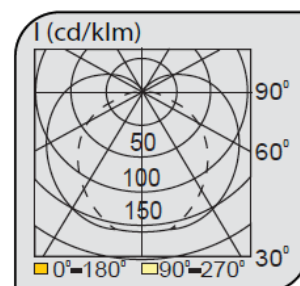
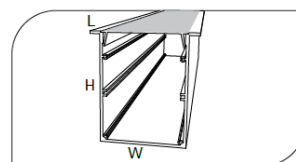
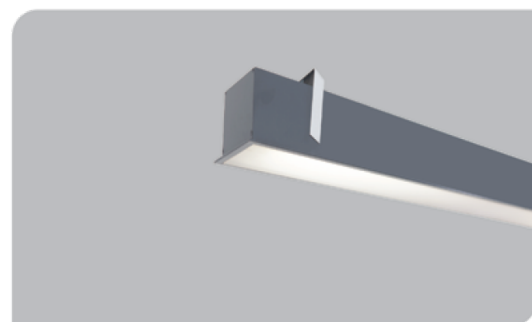


## Recessed Linear Luminaire

CE EN 60598-2-2 IP 40



Code	VK209 150LED
Power (W)	28,5
Light Flux (lm)	3450
Light Source	SMD LED
Color Temp	SMD LED
Dimensions (W/L/H mm)	80x1520x85
Cut Out (W/L/H mm)	70x1500x100
Weight (Kg)	-
Housing	Aluminium
Paint	Electrostatic Powder Coated
Balast	Vde Approved Driver
Diffuser	Opal PMMA Diffuser
Mounted	Recessed



Code	Power (W)	Light Flux (lm)	Light Source	Color Temp	Dimensions (W/L/H mm)	Cut Out (W/L/H mm)	Weight (Kg)
VK209 100LED	19	2300	SMD LED	3000-4000K	80x1020x85	70x1000x100	-
VK209 120LED	23	2750	SMD LED	3000-4000K	80x1220x85	70x1200x100	-
VK209 150LED	28,5	3450	SMD LED	3000-4000K	80x1520x85	70x1500x100	-